



MERCADO-House Middle East

middle-east@mercado-house.com

present



The patented

construction system for
highest **comfort**



kürzeste Bauzeit
massivste Konstruktion
beste Wärmedämmung

Successfully experiences for more than 25 years

- Up to 500% faster construction time
- Higher quality and exactness
- Up to 80% better insulation



Dear Contractor, Dear Customer,

We have been delivering unbeatably good-value raw construction material with the best thermal insulating properties for years. As a global company, we supply highly thermal-insulating, massive and easily processed material for the entire shell construction of all kinds of buildings.



MERCADO-House stands as a brand name for a complete construction system with EPS blocks of especially high quality. The heat transition coefficients of the finished walls range from $R=18$ to 63 ($U = 0,31$ to $0,09 \text{ W/m}^2\text{K}$)

We consult and supply exclusively to contracting companies, building associations, house-building companies that either support proprietors or who want to erect their houses through their personal contributions, construction firms and contractors that want to utilize our raw building materials in record-time shell constructions. (Single and multifamily housing, commercial and industrial construction)

The basis of our success is our ingenious construction system, our low-cost production, our „All-in-one structure“, the absolutely top calorific values of our exterior walls and the fast and really easy construction-system structure, both for complete laypersons as well as for seasoned contractors.



All blocks for 14 cm or 16 cm concrete core

25 cm thickness with
U-Value of 0,31 W/m²k (R=18,32)

30 cm thickness with
U-Value of 0,21 W/m²k (R=27,13)

35 cm thickness with
U-Value of 0,16 W/m²k (R=35,51)

40 cm thickness with
U-Value of 0,13 W/m²k (R=43,69)

45 cm thickness with
U-Value of 0,11 W/m²k (R=51,65)

50 cm thickness with
U-Value of 0,09 W/m²k (R=63,13)

- Simple filling with concrete, ensuring stability, additional insulation no longer necessary
- Extremely long durability, dimensionally stable, weather and ageing resistant
- Powerful structure against application winds during hurricanes and tornados
- Huge savings potential on heating energy and energy for air-conditioning
- No decomposition, no insect or termite infestation, not poisonous or toxic
- No absorbing of any moisture, high fire resistance, no self flammable
- Ecologically recyclable construction and insulation material
- Problem-free workmanship, grade-protected brand quality
- Environmentally friendly manufacture without CFC
- Proven in housing construction for 40 years



... Our System is Your Advantage !

...for architects

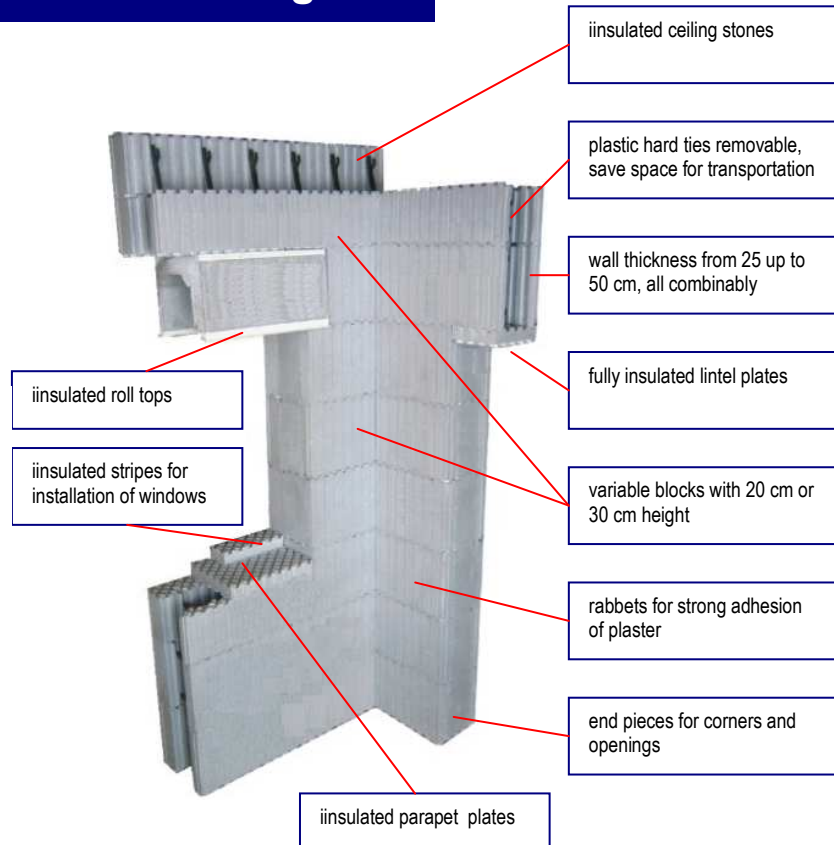
free designs possible
all kind of blocks combinably
no structural restrictions
very easy thermal calculations
no thermal bridges

...for constructors

no skilled bricklayers needed
higher speed of construction
less labour intensive
heavy and costly tools unnecessary
reduced risk of labour accidents

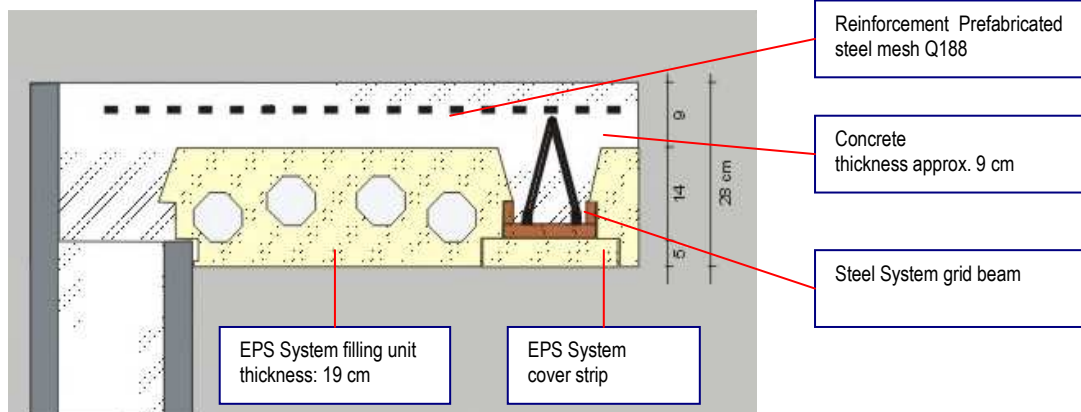
...for owners

using in both complex and simple modes of constructions
Double-sided insulation saves 50-70% in energy costs
Steel reinforcement is easily placed inside the block shutter, making the concrete even earthquake resistant.

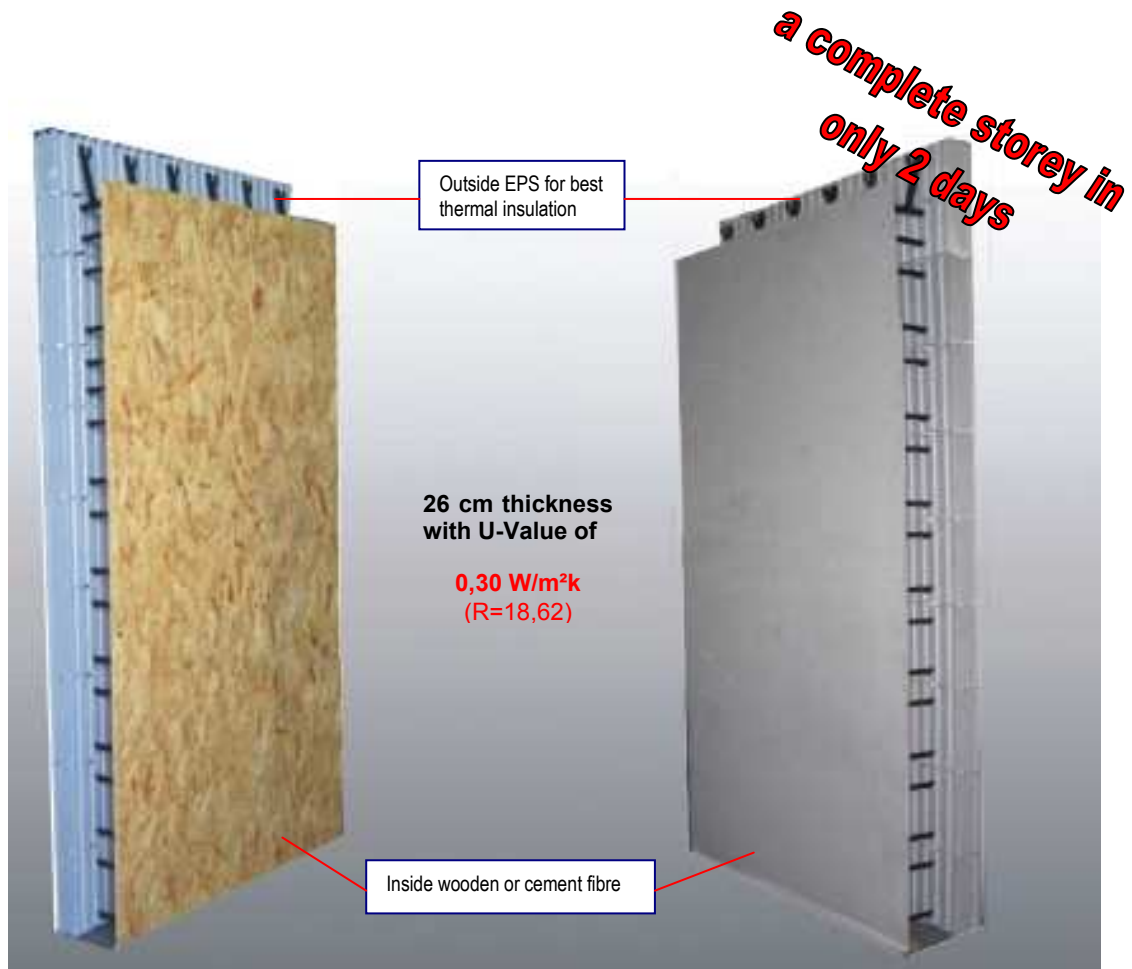


... highest insulation by our Filigran ceiling system

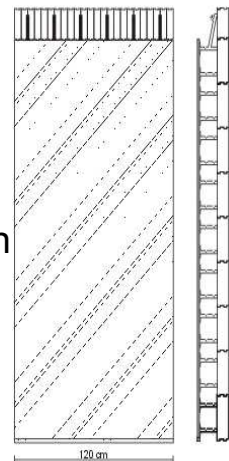
- simple and easy construction without any heavy equipment (crane)
- best thermal insulation
- maximum span up to 6,50 mtr.
- high loading of 350 kp/m²



... our system panels for high speed constructions



- simple and easy construction of schools, hospitals, labour camps and many more...
- very strong wall construction with 18 cm concrete core
- high speed construction with best thermal insulation
- size of elementes up to 3,24 m²



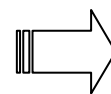
1. Setting



2. Adjusting



3. Pouring

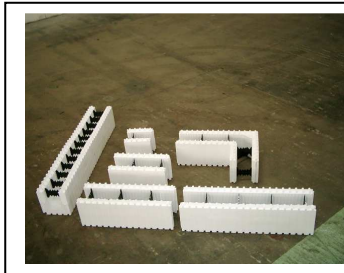


set ceiling
and start
with next
storey on
next day...

... setting of walls within **1 Hour** with **2** skilled labours



1. Precut blocks according to plan



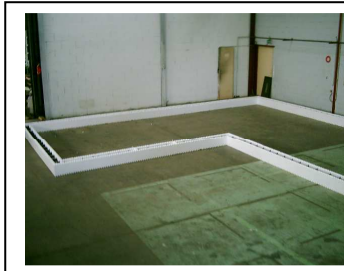
2. Range of blocks to be used



3. All the blocks needed



4. Platform



5. First layer in place



6. Second layer in place.



7. Trestles in place



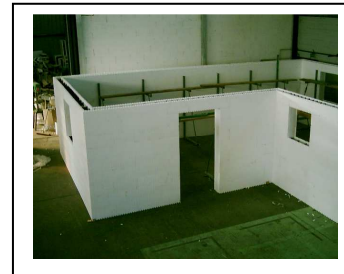
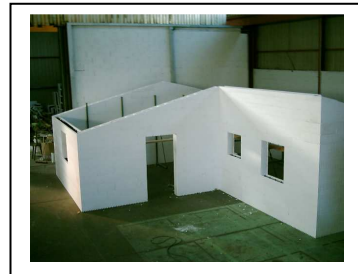
8. Vertical alignment.



9. Fourth layer



10. Fifth layer, lintels in place

11. After **1 hour**, first floor is complete12. Back Gables set, well within the **second hour**

enormous saving of construction time

The fact that construction materials initially start with low material prices but result in high final prices is predominantly due to the different working times required:

conventional construction: ca. 8 hour per 1m² **MERCADO-House system :** ca.1 hour per 1 m²

The high productivity found in the **MERCADO-House** system is also due to the reduced physical effort required. For 1 m² of a wall construction the following weights generally need to be manually moved:

Lime sandstone : 28 Kg
Porous brick : 25 Kg
Porous concrete : 19 Kg

MERCADO-House blocks 25cm : 0,55 Kg

... workmanship



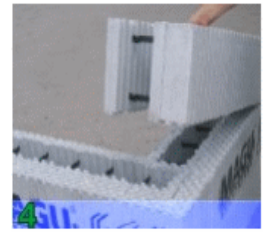
1. using of lightweight blocks



2. construct the foundation



3. drawing of lines



4. set the first 3 layers



5. no problem with arches



6. No restriction for designs



7. setting of all walls



8. setting of ceiling stones



9. pouring concrete



10. setting of Filigran ceiling



11. shell of house is finished after 14 days



26

... unique advantages for serious constructions

complete construction of small houses in France - time only 5 days include all installations



including:

- stones, concrete, foundation
- roof
- doors and windows
- electro installations
- sanitary installations

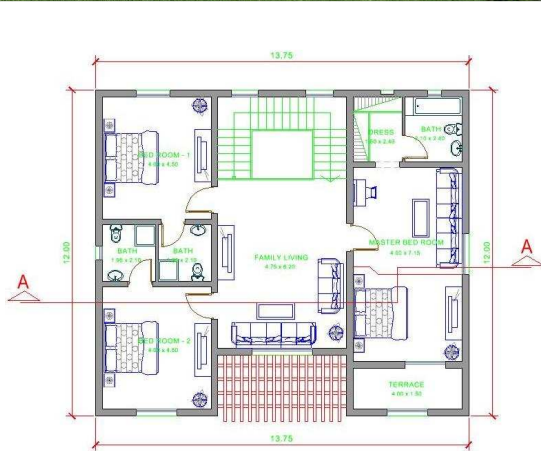
after 5 days Ready to move

concrete: 39 m³

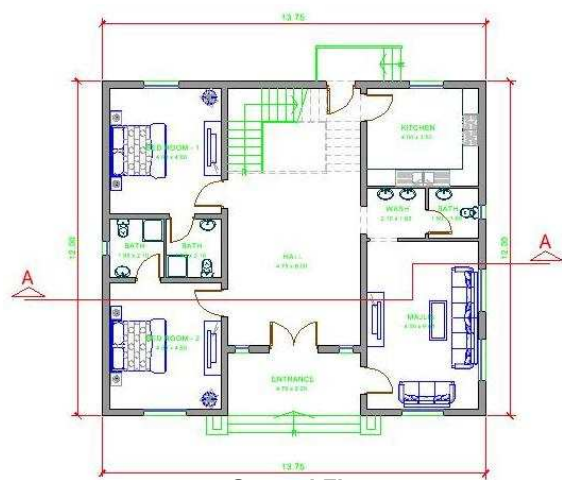
surface: 93 m²

rooms: living room - stay - kitchen - storeroom - bathroom - WC - hall - room 1 - room 2 - room 3

... example of a villa in Dubai



First Floor



Ground Floor

- 350 m² highest comfort
- needed for walls, foundation, ceilings approx. 160 m³ concrete C25 (Ready Mix)
- Huge savings potential on energy for air-conditioning (approx. 6.000 KWh monthly)
- enormous fast construction time by shell of house (approx. 4 weeks)
- No absorbing of any moisture, high fire resistance, no self flammable
- Ecologically recyclable construction and insulation material
- Problem-free workmanship, grade-protected brand quality
- Save costs for construction up to 25%
- Warranty of structure and insulation: 30 Years



This Villa is designed by **Smart Homes**

... MERCADO-House Middle East – Your Partner



Headquarter	MERCADO-House Middle East Company L.L.C. Dubai / United Arab Emirates middle-east@mercado-house.com service.middle-east@mercado-house.com
Saudi Arabia	AL AWAJI HOLDING Company Riyadh / Kingdom of Saudi Arabia alawaji@mercado-house.com
Oman	INJAZ INTERNATIONAL PROJECTS Company L.L.C Muscat / Sultanate of Oman injaz@mercado-house.com
Bahrain	Two Seas Construction Company Manama / Kingdom of Bahrain bahrain@mercado-house.com
Sudan	MERCADO-House Sudan Khartoum / Sudan e.ahmed@mercado-house.com

... International MERCADO constructions



HAUSBAU MIT SYSTEM
















































... FAQ

Isn't EPS unhealthy?

No. This material is one of the purest building materials of the highest standards, especially its claim to its foodgrade: even sensitive foodstuffs like fresh fish are allowed to be packed in rigid polystyrene foam! And rigid polystyrene foam passes these biological tests: the material is used for beehives, nesting boxes and breeding vessels for microorganisms.



Does it burn ?

EPS, which is used by our system, is made of flame-resistant rigid foam. The material itself is not flammable. On top of that, the interior and outdoor plastering protects the material from any possible flames.

The concrete cannot burn, and the EPS foam is selfextinguishing. In a really fierce blaze, well after the occupants have left, the main gases produced are CO₂ and water vapour, with a minute amount of styrene, bromide and CO₂, which are less harmful than the compounds produced by the same volume of other building materials. The structural stability of the concrete reduces the risk of building collapse.

How durable is a building ?

Solid structure houses built using our system are just as stable as standard brick houses. The oldest building made with rigid foam insulation is about 50 years old and does not show even the smallest signs of aging. With the insulation, the concrete core is reliably protected from weathering elements on top of that.

How robust is the structure?

Buildings with styro stones have been in use on the Continent, North America and Australasia for over 50 years with no record of failure. The walls are just as robust as normal walls. The concrete core, the interior and exterior insulation and the required 10 mm plastering coat inside and outside make sure of that.

How are items fastened?

For wall cupboards, notch out the interior insulation and dowel on the lumber strip. All additional fastenings can be attached to it. Fasten pictures with X-hooks, anchor heavy pictures, light wall cabinets and shelves with standard frame dowels in the concrete core or using insulation dowels. Whereas the extraction resistances in customary, thermal insulating masonry stone end at 5 kN (500 kp), the concrete core of our system has an extraction resistance of up to 100 kN (100 kp).

What is EPS ?

Expanded Polystyrene (EPS) is a lightweight, rigid, plastic foam insulation material produced from solid beads of polystyrene. Expansion is achieved by virtue of small amounts of pentane gas dissolved into the polystyrene base material during production. The gas expands under the action of heat, applied as steam, to form perfectly closed cells of EPS. These cells occupy approximately 40 times the volume of the original polystyrene bead.

OUR MISSION STATEMENT: To organize and implement the supply of a high quality eco-friendly building system at a cost effective price. To supply ongoing customer support and training to ensure the successful construction of the project.



MERCADO-House Middle East

Your Partner for your Stable-Investment property

Please give us a call: +971 50 887 5684

www-mercado-house.com

middle-east@mercado-house.com